



The Town of Eston and Loraas Environmental Services are proud to announce an upcoming partnership for collection of single stream recycling from your home. Each household in Eston will receive one blue cart for recyclable material. These carts will have a serial number assigned to your household. Please record your serial number. The carts will be delivered starting Thursday May 31. If you have not received a cart by June 2, please contact 306-445-3900.

Open House

Ask all your questions related to the curbside recycle and waste collection changes at the come and go open house.

Wednesday May 30
7:00pm-8:30pm
AGT Community Centre

Waste Pickup – Garbage days are changing!

Please note that effective the week of June 11, 2018, weekly curbside waste/garbage pickup days will change as follows:

- Wednesday – East of Main St and North of Railway Ave (including Gatenby and industrial area)
- Friday – West of Main St
- Wednesday and Friday – Large commercial

Accepted Recyclable Materials

- Tin and aluminum cans and trays
- All recyclable paper fibres (cardboard, newsprint, magazines, boxboard, office paper)
- All grades of plastics numbered 1 through 7



eston.ca

Did you know?

- While the Town's recycle centre will be closing, additional recycle depots will be set up for RM residents to drop their materials on 3rd St W near the AGT Community Centre.
- The SARCAN operation will continue as it is run separately from the Town of Eston.
- Remember, materials are not to be bagged. Loose materials ensure the efficiency of the sorting system.
- Glass, stretchable plastics, film plastics and plastic bags are no longer accepted.
- Curbside recycle pickup will continue to be Mondays but will now occur every other week.
- Worried about running out of room in your bin? An extra bin can be rented for \$5/month. Contact the Town Office to arrange an additional bin.
- Commercial operations that require more than the standard rollout bin are to contract a larger bin rental directly from Loraas Environmental.
- Carts must be placed, wheels toward the curb, no later than 7am on collection day.
- Please rinse containers, break down cardboard and bag shredded paper only.
- Overfilled and/or contaminated carts (those containing dirty or non-recyclable materials) will not be collected.
- Carts must be placed 4 feet from any vehicle or obstruction.
- Environmental fees, which cover recycling pickup, waste pickup and landfill operating costs, are charged on utility bills. Rates will remain the same for residential properties and have been reduced for commercial properties in anticipation of their need to rent larger bins.
- If you have any questions, please do not hesitate to contact Loraas Environmental at 306-445-3900 or the Town of Eston Office at 306-962-4444.

Environmental Fees



Category	Current Rate	New Rate
Residential (New includes rollout bin)	\$25/month	\$25/month
Commercial (New includes rollout bin)	\$35/month	\$25/month
Commercial <20 Units & Restaurants	\$100/month	\$65/month
Commercial >20 Units	\$150/month	\$115/month
Special Care Homes	\$310/month	\$260/month
Extra roll out bin	na	\$5/month

We look forward to serving you!



Loraas Environmental Services Ltd.
 113 Shorthorn Street, Box 1366
 North Battleford, SK S9A 3L8
 Phone (866) LORAAS-1 | Fax (306)445-7600
Customer.service@loraasenviro.ca

Recyclable Materials Accepted:

Tin cans, aluminum cans & trays, all recyclable paper fibres (cardboard, newsprint, magazines, boxboard, office paper). All grades of plastics numbered  through  on the bottom. Please break down cardboard and rinse containers. Place all items loose inside container. **Do not bag or tie.**

ESTON - 2018 COLLECTION SCHEDULE

THANK YOU FOR HELPING US KEEP OUR ENVIRONMENT CLEAN!

- Ensure your cart is rolled out curbside by 7 a.m. on your designated collection day.
- Collection equipment requires **clear, safe access** to your cart.
- Do not place your container within 4 feet of buildings, vehicles, overhead and underground utilities.
- We are not responsible for any damage resulting from service provision.
- NO GLASS OR STYROFOAM OR STRETCHABLE/FILM PLASTICS IN RECYCLE CARTS PLEASE
- Containers with inappropriate materials, overweight or **overloaded** will be bypassed by collection personnel.
- Should your scheduled collection day fall on a statutory holiday, please be advised of service changes as marked
- Collection will resume following any disruption due to inclement weather or road bans
- If you have any questions about the program, please do not hesitate to contact us @ 1-866-LORAAS-1

 RECYCLE PICK UP DAY **2018**

JANUARY							FEBRUARY							MARCH							APRIL						
S	M	T	W	T	F	S	S	M	T	W	T	F	S	S	M	T	W	T	F	S	S	M	T	W	T	F	S
31	1	2	3	4	5	6	28	29	30	31	1	2	3	25	26	27	28	1	2	3	1	2	3	4	5	6	7
7	8	9	10	11	12	13	4	5	6	7	8	9	10	4	5	6	7	8	9	10	8	9	10	11	12	13	14
14	15	16	17	18	19	20	11	12	13	14	15	16	17	11	12	13	14	15	16	17	15	16	17	18	19	20	21
21	22	23	24	25	26	27	18	19	20	21	22	23	24	18	19	20	21	22	23	24	22	23	24	25	26	27	28
28	29	30	31	1	2	3	25	26	27	28	1	2	3	25	26	27	28	29	30	31	29	30	1	2	3	4	5
4	5	6	7	8	9	10	4	5	6	7	8	9	10	1	2	3	4	5	6	7	6	7	8	9	10	11	12

MAY							JUNE							JULY							AUGUST						
S	M	T	W	T	F	S	S	M	T	W	T	F	S	S	M	T	W	T	F	S	S	M	T	W	T	F	S
29	30	1	2	3	4	5	27	28	29	30	31	1	2	1	2	3	4	5	6	7	29	30	31	1	2	3	4
6	7	8	9	10	11	12	3	4	5	6	7	8	9	8	9	10	11	12	13	14	5	6	7	8	9	10	11
13	14	15	16	17	18	19	10	11	12	13	14	15	16	15	16	17	18	19	20	21	12	13	14	15	16	17	18
20	21	22	23	24	25	26	17	18	19	20	21	22	23	22	23	24	25	26	27	28	19	20	21	22	23	24	25
27	28	29	30	31	1	2	24	25	26	27	28	29	30	29	30	31	1	2	3	4	26	27	28	29	30	31	1
3	4	5	6	7	8	9	1	2	3	4	5	6	7	5	6	7	8	9	10	11	2	3	4	5	6	7	8

SEPTEMBER							OCTOBER							NOVEMBER							DECEMBER						
S	M	T	W	T	F	S	S	M	T	W	T	F	S	S	M	T	W	T	F	S	S	M	T	W	T	F	S
26	27	28	29	30	31	1	30	1	2	3	4	5	6	28	29	30	31	1	2	3	25	26	27	28	29	30	1
2	3	4	5	6	7	8	7	8	9	10	11	12	13	4	5	6	7	8	9	10	2	3	4	5	6	7	8
9	10	11	12	13	14	15	14	15	16	17	18	19	20	11	12	13	14	15	16	17	9	10	11	12	13	14	15
16	17	18	19	20	21	22	21	22	23	24	25	26	27	18	19	20	21	22	23	24	16	17	18	19	20	21	22
23	24	25	26	27	28	29	28	29	30	31	1	2	3	25	26	27	28	29	30	1	23	24	25	26	27	28	29
30	1	2	3	4	5	6	4	5	6	7	8	9	10	2	3	4	5	6	7	8	30	31	1	2	3	4	5



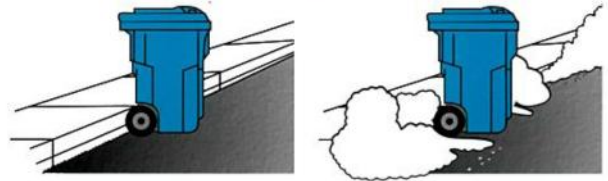
General Guidelines for Curbside Recycling

- Cart lids must be completely closed for safety to surrounding property and prevention of windblown materials. Over-filled carts with open lids may not be emptied
- Place your cart with wheels against the curb by 7:00 am on collection day
- Use your roll-out cart for the storage and collection of approved recyclables only
- Please do not bag or tie your recyclables except plastic bags and shredded paper
- Return your empty cart to your property before the end of collection day
- In the event of severe weather, please leave your cart curbside. Our trucks will provide service as soon as possible after conditions have cleared
- Do not remove your cart from its assigned address
- Do not paint or mark your cart
- Please inform Loraas Environmental of any damage, vandalism, or theft of your cart; replacement carts are at the homeowner's cost

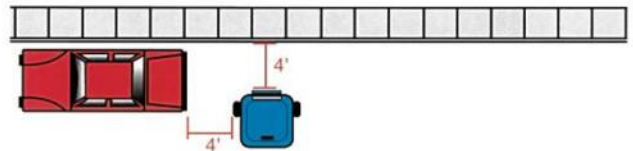
For your child's safety, do not allow them to play near the collection containers or vehicles

By following these instructions, you will assist in making your community one of the cleanest and greenest in Saskatchewan!

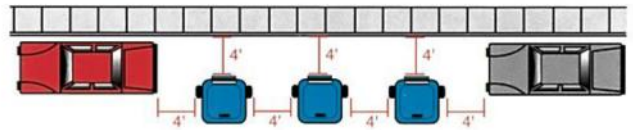
Ideal Location #1 Snow Bank #2



Close to a Parked Car or Other Obstructions #3



Between Two Parked Cars #4



Cul-de-sac #5

